



Venta de Maquinaria Industrial y Agrícola  
 Km 24 Carr. Alvaro Obregón  
 Cd. Cuauhtemoc, Chih.

Tels: (625) 586 6477 y 52 (625) 586 6412  
 Cels: (625) 590 8941 - (625) 115 4764 - (625) 134 4523  
 Cels: (625) 100 1010 - (625) 283 9741  
 E-mails: awiebe71@hotmail.com, ventas@maquinariaw.com.mx

No. Folio: 11515

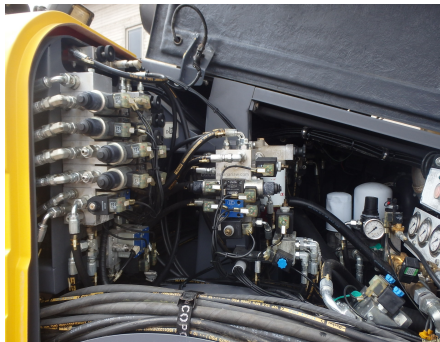
**FLEXIROC (PERFORADORA)**

ATLAS COPCO

T20 R

2010

AV010V1009/889 6000 09



Specifications Product ID: 8

Engine	Electrical system																		
<ul style="list-style-type: none"> <li>• Cummins QSB3.3 (4-cyl. turbo)</li> <li>• Power: 110 HP (81 kW)</li> <li>• Operating speed: 2400 RPM</li> </ul>	<ul style="list-style-type: none"> <li>• Voltage: 24 VDC</li> <li>• Capacity: 20 Ah</li> <li>• Battery type: AGM</li> <li>• Battery weight: 12.3 kg</li> <li>• Battery volume: 12.3 L</li> <li>• Battery capacity: 12.3 Ah</li> </ul>																		
Fuel	Weights																		
<ul style="list-style-type: none"> <li>• Fuel tank capacity: 100 L</li> <li>• Fuel tank volume: 100 L</li> <li>• Fuel tank weight: 10 kg</li> <li>• Fuel tank volume: 100 L</li> <li>• Fuel tank weight: 10 kg</li> <li>• Fuel tank volume: 100 L</li> <li>• Fuel tank weight: 10 kg</li> </ul>	<ul style="list-style-type: none"> <li>• Overall weight: 5750 kg</li> <li>• Overall height: 2.1 m</li> <li>• Overall length: 5.7 m</li> <li>• Overall width: 1.9 m</li> <li>• Overall height: 2.1 m</li> <li>• Overall length: 5.7 m</li> <li>• Overall width: 1.9 m</li> </ul>																		
Drill motor	Dimensions (mm) and weight																		
<ul style="list-style-type: none"> <li>• Drill motor: CP 1140</li> <li>• Drill motor power: 14.8 HP</li> <li>• Drill motor speed: 2400 RPM</li> <li>• Drill motor torque: 14.8 HP</li> <li>• Drill motor speed: 2400 RPM</li> <li>• Drill motor torque: 14.8 HP</li> </ul>	<table border="1"> <thead> <tr> <th colspan="2">Weight</th> </tr> <tr> <th colspan="2">Standard unit excluding all options and drill tool</th> </tr> </thead> <tbody> <tr> <td>kg</td> <td>5750 kg</td> </tr> <tr> <td>lb</td> <td>12745 lb</td> </tr> </tbody> </table> <table border="1"> <thead> <tr> <th colspan="2">Height and length</th> </tr> <tr> <th colspan="2">Feed dumper</th> </tr> </thead> <tbody> <tr> <td>Height (H1)</td> <td>2 600 mm / 8' 6"</td> </tr> <tr> <td>Length (L1)</td> <td>5 700 mm / 18' 8"</td> </tr> <tr> <td>Width (W1)</td> <td>1 900 mm / 6' 3"</td> </tr> </tbody> </table>	Weight		Standard unit excluding all options and drill tool		kg	5750 kg	lb	12745 lb	Height and length		Feed dumper		Height (H1)	2 600 mm / 8' 6"	Length (L1)	5 700 mm / 18' 8"	Width (W1)	1 900 mm / 6' 3"
Weight																			
Standard unit excluding all options and drill tool																			
kg	5750 kg																		
lb	12745 lb																		
Height and length																			
Feed dumper																			
Height (H1)	2 600 mm / 8' 6"																		
Length (L1)	5 700 mm / 18' 8"																		
Width (W1)	1 900 mm / 6' 3"																		
Engine	Hole range																		
<ul style="list-style-type: none"> <li>• Diesel engine: CP 1140</li> <li>• Diesel engine power: 14.8 HP</li> <li>• Diesel engine speed: 2400 RPM</li> <li>• Diesel engine torque: 14.8 HP</li> <li>• Diesel engine speed: 2400 RPM</li> <li>• Diesel engine torque: 14.8 HP</li> </ul>	<table border="1"> <thead> <tr> <th>Rock drill</th> <th>Drill type</th> <th>Drill diameter</th> </tr> <tr> <th>mm</th> <th>inch</th> <th>inch</th> </tr> </thead> <tbody> <tr> <td>100 / 39.37</td> <td>1/2"</td> <td>1 1/2"</td> </tr> </tbody> </table>	Rock drill	Drill type	Drill diameter	mm	inch	inch	100 / 39.37	1/2"	1 1/2"									
Rock drill	Drill type	Drill diameter																	
mm	inch	inch																	
100 / 39.37	1/2"	1 1/2"																	
Hydraulic system	Hydraulic rock drill																		
<ul style="list-style-type: none"> <li>• Hydraulic system: CP 1140</li> <li>• Hydraulic system power: 14.8 HP</li> <li>• Hydraulic system speed: 2400 RPM</li> <li>• Hydraulic system torque: 14.8 HP</li> <li>• Hydraulic system speed: 2400 RPM</li> <li>• Hydraulic system torque: 14.8 HP</li> </ul>	<table border="1"> <thead> <tr> <th>Rock drill</th> <th>Drill type</th> <th>Drill diameter</th> <th>Drill length</th> <th>Drill weight</th> </tr> <tr> <th>mm</th> <th>inch</th> <th>inch</th> <th>mm</th> <th>kg</th> </tr> </thead> <tbody> <tr> <td>100 / 39.37</td> <td>1/2"</td> <td>1 1/2"</td> <td>14.8</td> <td>14.8</td> </tr> </tbody> </table>	Rock drill	Drill type	Drill diameter	Drill length	Drill weight	mm	inch	inch	mm	kg	100 / 39.37	1/2"	1 1/2"	14.8	14.8			
Rock drill	Drill type	Drill diameter	Drill length	Drill weight															
mm	inch	inch	mm	kg															
100 / 39.37	1/2"	1 1/2"	14.8	14.8															

CON MOTOR CUMMINS QSB3.3 A DIESEL DE 4 CILINDROS, CON TURBO, DE 110 HP, 2,400 RPM, PERFORADORA CON CONTROL REMOTO Y ALCANCE DE 50 MTS, DIAMETRO DE PERFORACION DE 1 1/2, 2 1/2 DE PULGADAS, SALIDA DE DRILL DE 14.8 HP. PERFORADORA CP 1140, NEUMATICOS 12.16.5, PESO 5,750 KG , - -