



Venta de Maquinaria Industrial y Agrícola
 Km 24 Carr. Alvaro Obregón
 Cd. Cuauhtemoc, Chih.

Tels: (625) 586 6477 y 52 (625) 586 6412
 Cels: (625) 590 8941 - (625) 115 4764 - (625) 134 4523
 Cels: (625) 100 1010 - (625) 283 9741
 E-mails: awiebe71@hotmail.com, ventas@maquinariaw.com.mx

No. Folio: 14787

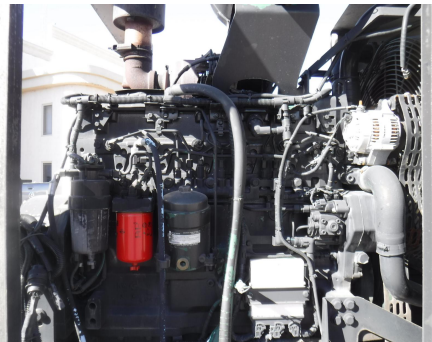
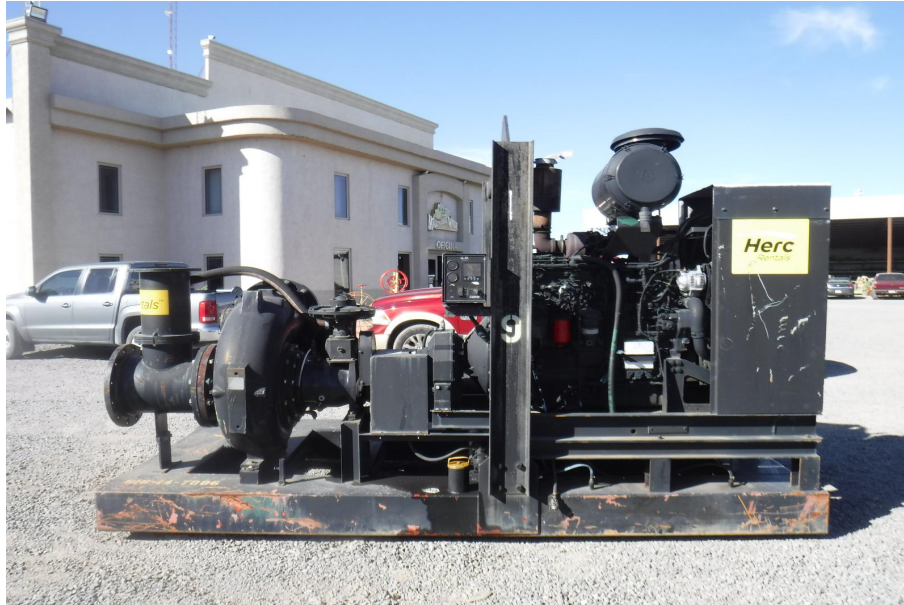
BOMBA

PIONEER

PP1414S17L71B

2007

8388



Pioneer Prime Solids Handling Packages							
Pump Model	PP44S10	PP66S12	PP88S12	PP108S17	PP1212S17	PP1414S17	PP1818S22
Suction/Discharge Connections	4" x 4"	6" x 6"	8" x 8"	10" x 8"	12" x 12"	14" x 14"	18" x 18"
Max Flow (Runout)	18.00 GPM	38.00 GPM	44.00 GPM	65.00 GPM	92.00 GPM	110.00 GPM	139.00 GPM
Max Head (Shutoff)	180ft @ 2200rpm	152ft @ 2000rpm	200ft @ 2000rpm	365ft @ 1800rpm	300ft @ 1780rpm	140ft @ 1180rpm	218ft @ 1200rpm
Impeller Diameter	10"	12"	12.25"	17.5"	17.25"	17.5"	22.5"
Engine Type	C2.2T 39HP @ 1800 RPM	C4.4T 74HP @ 1800 RPM	C4.4TA 89HP @ 1800 RPM	C11TA 325HP @ 1800 RPM	C11TA 325HP @ 1800 RPM	C8TA 230HP @ 1800 RPM	C18TA 575HP @ 1800 RPM
Fuel Consumption	2.2 GPH	3.8 GPH	4.6 GPH	16.7 GPH	16.7 GPH	14.5 GPH	28.7 GPH
Fuel Tank Capacity (GAL)	60	85	85	275	275	275	275
Priming System Air Removal Capacity	50 cfm	50 cfm	50 cfm	50 cfm	50 cfm	50 cfm	50 cfm
Solids Handling	3.00"	3.00"	3.00"	3.50"	3.60"	4.00"	4.50"
Standard Package	DOT Trailer Mounted	DOT Trailer Mounted	DOT Trailer Mounted	Skid Mounted - DOT Trailer Optional	Skid Mounted - DOT Trailer Optional	Skid Mounted	Skid Mounted

CON MOTOR JOHN DEER 6090L A DIESEL 6 CILINDROS, CON TURBO, MARCA EN HORAS 7,646, BOMBA DE AGUA MARCA PIONEER MOD. PP1414S17, ENTRADA Y SALIDA DE 14 PULGADAS,

, - -