



Venta de Maquinaria Industrial y Agrícola
 Km 24 Carr. Alvaro Obregón
 Cd. Cuauhtemoc, Chih.

Tels: (625) 586 6477 y 52 (625) 586 6412
 Cels: (625) 590 8941 - (625) 115 4764 - (625) 134 4523
 Cels: (625) 100 1010 - (625) 283 9741
 E-mails: awiebe71@hotmail.com, ventas@maquinariaw.com.mx

No. Folio: 14912

MARTILLO HIDRAULICO

TRAMAC

501NG

0

M501A50017



HYDRAULIC ROCK BREAKER
COMPACT FRAME
WITH HEAVY POWER

501NG

WEIGHT & DIMENSIONS

WEIGHT (KILG)	
- BREAKER	401 1.325
- HYDRAULIC HOSE	406 1.408
- HYDRAULIC ADAPTER PLATE (MM)	859 1.894
DIMENSIONS (MM/IN)	
A	1.241 48.85
B	347 13.66
C	200 7.87
D	430 16.93
E	51 2
F	8 0.31

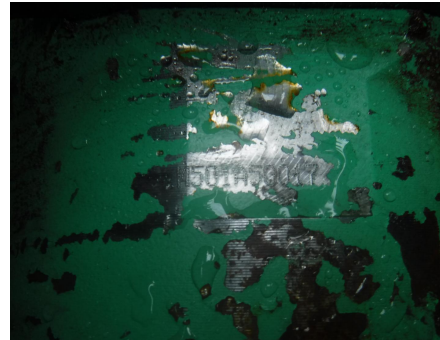
OPERATING INFORMATION

OPERATING WEIGHT (MM) NET	9 - 16
BL. CIVIL (MM) MAX. L. (MM) L. (MM)	80 - 140 211.3 - 52
MAXIMUM OPERATING PRESSURE (BAR/PSI)	140 2032
MAXIMUM HOSE PRESSURE (BAR/PSI)	15 218
IMPACT POWER (KW)	32.6
IMPACT ENERGY (J)	400 290
IMPACT ENERGY CLASS (PJ. LB)	2.000
IMPACT TEST (CON. TEST)	96
WORKING SPEED	standard
PROTECTOR	optional

CONSUMABLES

IMPACT PUMP (PISTON CENTER) (L/HR)	64799152
IMPACT CENTER (L/HR)	64794754

PART NUMBER



PARA EQUIPOS DE 9 A 16 TONELDAS, PESO 1894 LBS