



Venta de Maquinaria Industrial y Agrícola
 Km 24 Carr. Alvaro Obregón
 Cd. Cuauhtemoc, Chih.

Tels: (625) 586 6477 y 52 (625) 586 6412
 Cels: (625) 590 8941 - (625) 115 4764 - (625) 134 4523
 Cels: (625) 100 1010 - (625) 283 9741
 E-mails: awiebe71@hotmail.com, ventas@maquinariaw.com.mx

No. Folio: 14973

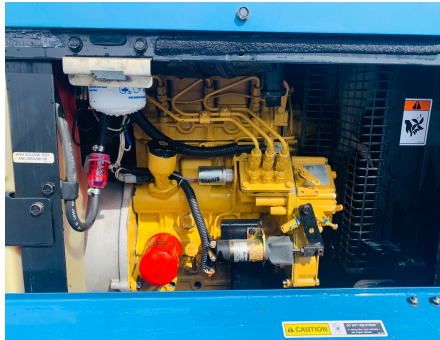
SOLDADORA PORTATIL MILLER PRO 300

MILLER

PRO 300

2005

LF297782



SECTION 4 – SPECIFICATIONS

4-1. Weld, Power, And Engine Specifications

Welding Mode	Weld Output Range	Rated Welding Output	Maximum Open-Circuit Voltage	Generator Power Rating	Engine	Fuel Capacity
CCDC	30 - 450 A	300 A, 200 VDC, 40% Duty Cycle 300 A, 100 VDC, 40% Duty Cycle 300 A, 200 VDC, 100% Duty Cycle 300 A, 100 VDC, 100% Duty Cycle	65	Single Phase, 100/200VAC, 60/50 Hz, 15 kW	CAT Caterpillar 3013C Diesel Engine 21.7 HP Diesel Engine	1.5 Gals 56.7 L
CVDC	14 - 40 V	300 A, 200 VDC, 40% Duty Cycle 300 A, 100 VDC, 40% Duty Cycle 300 A, 200 VDC, 100% Duty Cycle 300 A, 100 VDC, 100% Duty Cycle				

4-2. Dimensions, Weights, And Operating Angles

Dimensions

Height	36.2 in (920 mm) 36.2 in (920 mm) 35.5 in (903 mm)
Width	30.7 in (780 mm) 30.7 in (780 mm) 30.7 in (780 mm)
Depth	36.2 in (920 mm)
A	36.2 in (920 mm)
B	36.2 in (920 mm)
C	36.2 in (920 mm)
D	36.2 in (920 mm)
E	36.2 in (920 mm)
F	36.2 in (920 mm)
G	36.2 in (920 mm)
H	36.2 in (920 mm)

Weight

No. Fuel: 1100 lb (499 kg)
 w/ Fuel: 1100 lb (499 kg)
 Lifting Eye Weight Rating: 1000 lb (454 kg)

Operating Angles

Do not exceed 45° angles or engine could be damaged or unit could tip.
 Do not exceed 30° angles or engine could be damaged or unit could tip.

CON MOTOR CAT 3013C A DIESEL 3 CILINDROS DE 21.7 HP, CAPACIDAD DE 300 AMPERES, NEUMATICOS ST175/80D13, PESO 1,200 LBS, - -