



Venta de Maquinaria Industrial y Agrícola
 Km 24 Carr. Alvaro Obregón
 Cd. Cuauhtemoc, Chih.

Tels: (625) 586 6477 y 52 (625) 586 6412
 Cels: (625) 590 8941 - (625) 115 4764 - (625) 134 4523
 Cels: (625) 100 1010 - (625) 283 9741
 E-mails: awiebe71@hotmail.com, ventas@maquinariaw.com.mx

No. Folio: 15521

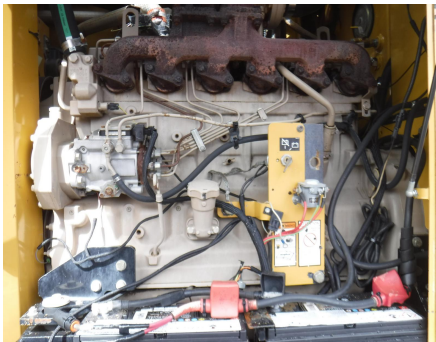
PERFORADORA DIRECCIONAL

VERMEER

D80X100

2006

1VRZ2707861000127



Model: D80x100
 Rig Size: 50,001 - 100,000 lbs pullback

[View Manufacturers](#) [View Models](#)

SPCS

| | |
|--------------------------------|--------------|
| Engine Cooling System | 15 qt |
| Fuel Tank Capacity | 62 gal |
| Fuel Type | Diesel |
| Ground Drive Speed | 3.3 mph |
| Height | 96" |
| Hydraulic Tank Capacity | 61 gal |
| Length | 27.5' |
| Length | 18' |
| Make and Model | Cummins |
| Manufacturer's Gross HP Rating | 290 hp |
| Max Flow | 150 GPM |
| Max Pressure | 1000 PSI |
| Max Speed | 2500 RPM |
| Max Spindle Speed | 190 RPM |
| Max Spindle Torque | 16,000 Ft-lb |
| Min Bend Radius | 197.4' |
| Min Bore Diameter | 5" |
| Pipe Diameter | 3.5" |
| Pullback | 80,000 lbs |
| Road Carrying Capacity | 2700' |
| Road Loader | Automated |
| Thrust | 50,000 lbs |
| Torque | 10,000 Ft-lb |
| Weight | 37,200 lbs |
| Weight | 244 lbs |
| Width | 93" |

CON MOTOR JOHN DEERE A DIESEL CON TURBO, BOMBA DE AGUA MARCA KERR, 24 BARRAS DE 15 FT DE LARGO, 24 BARRAS DE PERFORACION, CON 9,267 HORAS, PESO 37,200 LBS, - -