



Venta de Maquinaria Industrial y Agrícola
 Km 24 Carr. Alvaro Obregón
 Cd. Cuauhtemoc, Chih.

Tels: (625) 586 6477 y 52 (625) 586 6412
 Cels: (625) 590 8941 - (625) 115 4764 - (625) 134 4523
 Cels: (625) 100 1010 - (625) 283 9741
 E-mails: awiebe71@hotmail.com, ventas@maquinariaw.com.mx

No. Folio: 15522

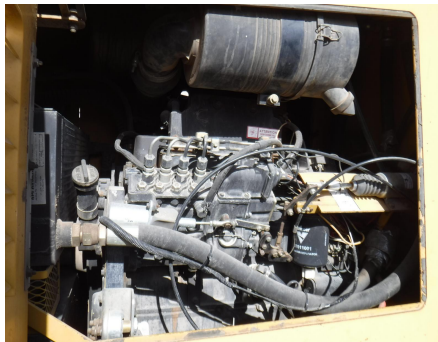
PERFORADORA DIRECCIONAL

VERMEER

D40X40

1994

1VRS18005W1000115



Model: D40x40
 Rig Size: 30,000 - 50,000 lbs pullback

[View Manufacturers](#) [View Models](#)

SPCS US Metric

Entry Angle	21 deg
Fuel Tank	62 gal
Fuel Tank Capacity	11.5 qt
Fuel Type	Diesel
Ground Drive Speed	2.1 mph
Height	96"
Hydraulic Tank Capacity	61 gal
Length	204"
Length	15'
Make and Model	Cummins-48TAK3.9
Manufacturer's Gross HP Rating	125 HP
Max Carriage Speed	96 ft/min
Max Flow	60 gpm
Max Pressure	1500 psi
Max Spindle Torque	1,900 ft-lb
Min Bore Diameter	3.5"
Rig Diameter	3.375"
Pullback	40,000 lbs
Rated Engine RPM	2200 RPM
Rod Carrying Capacity	750'
Rod Loader	Automated Rod Loader
Thrust	29,000 lbs
Torque	1,900 ft-lb @ 242 RPM
Weight	110
Weight	29,000 lbs
WSSH	96"

[View Manufacturers](#) [View Models](#)

CON MOTOR CUMMINS B3.9 A DIESEL, DE 125 HP, CON 4,212 HORAS, BOMBA DE AGUA MARCA APLEX MODELO S0-65L, 48 BARRAS, PESO 29,000 LBS, - -