



- Venta de Maquinaria Industrial y Agrícola -  
 Km 24 Carr. Alvaro Obregón  
 Cd. Cuauhtemoc, Chih.

Tels: (625) 586 6477 y 52 (625) 586 6412  
 Cels: 625) 590 8941 - (625) 115 4764 - (625) 134 4523  
 Cels: (625) 100 1010 - (625) 283 9741  
 E-mails: awiebe71@hotmail.com, ventas@maquinariaw.com.mx

No. Folio: 16304

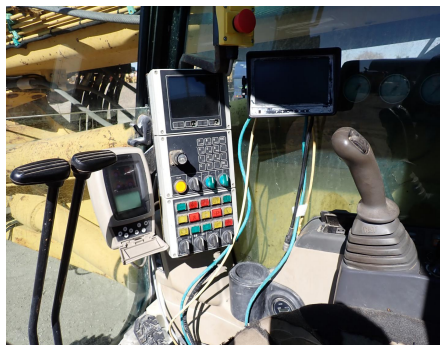
PILOTEADORA SOBRE ORUGAS IMT COUGAR AF 215

IMT

COUGAR AF 215

2005

AF215NXN1191



AF215 C.F.A		
Max. drilling torque	shNm	215 @ 6 rpm
Max. drilling speed	Rd ft	16850 @ 6 rpm
Maximum unloading speed	rpm	110
Pushing force	kN	55000
Pulling force	kN	534
Max. push/pull speed	m/min	120000
Rotary stroke	mm	18000
Mast side inclination	in	74°
Mast forward inclination	in	8°
Mast backwards inclination	in	15°
Engine model		CAT 3126 ATAAC
Installed power	HP	250
Engine rpm	rpm	1800
Auxiliary winch pulling force	kN	115
Auxiliary rope diameter	mm	34000
Auxiliary rope speed	m/min	22
Drilling depth maximum w/ optional extension 4019	m	7/8
Pile diameter maximum @ mast	mm	40
Track diameter overall length	mm	205
Track shoe width	mm	25
Overall width in drilling position	mm	3200
Overall width in transport position	mm	200
Undercarriage traction force	kN	4300
Base type	in	365
Weight with standard tool	t (metric)	CAT 3200 HP
	ton	62
		150700

Precio: 175,000.00 USD mas IVA

PILOTEADORA SOBRE ORUGAS IMT COUGAR AF 215 MONTADO EN CHASIS CATERPILLAR 325C, CON MOTOR DIESEL CATERPILLAR 3126 DE 250 HP, ALCANSE DE 60 PIES DE PRODUNDIDAD O HASTA 80 PIES CON EXTENCION, DIAMETRO MAXIMO DE PREFORACION DE 4 PIES, TORQUE DE PERFORACION DE 158,500 IBF FT @ 6 RPM, VOLICIDAD DE PREFORACION 26 RPM, MAXIMA VELOCIDAD DE DESCARGA 110 RPM, FUERZA DE EMPUJE 56,000 IBF, FUERZA DE TRACCION 120,000 IBF, - -