



Venta de Maquinaria Industrial y Agrícola
Km 24 Carr. Alvaro Obregón
Cd. Cuauhtemoc, Chih.

Tels: (625) 586 6477 y 52 (625) 586 6412
Cels: (625) 590 8941 - (625) 115 4764 - (625) 134 4523
Cels: (625) 100 1010 - (625) 283 9741
E-mails: awiebe71@hotmail.com, ventas@maquinariaw.com.mx

No. Folio: 16698

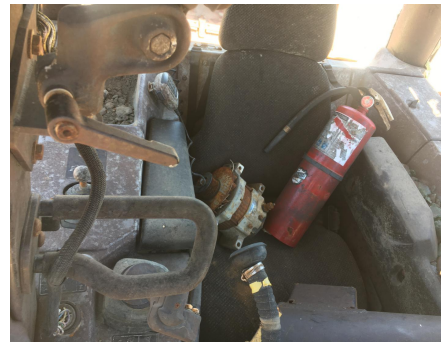
TOPADOR FRONTAL CATERPILLAR D6N XL

CATERPILLAR

D6N XL

2011

CAT00D6NHLJR00415



CON MOTOR CAT C6.6 ACERT A DIESEL, TRANSMISION DD/PS, CAP. C.Y. 4.3, PALA DE 10 FT, PESO 36,943 LBS, - -