



Venta de Maquinaria Industrial y Agrícola
Km 24 Carr. Alvaro Obregón
Cd. Cuauhtemoc, Chih.

Tels: (625) 586 6477 y 52 (625) 586 6412
Cels: (625) 590 8941 - (625) 115 4764 - (625) 134 4523
Cels: (625) 100 1010 - (625) 283 9741
E-mails: awiebe71@hotmail.com, ventas@maquinariaw.com.mx

No. Folio: 18641

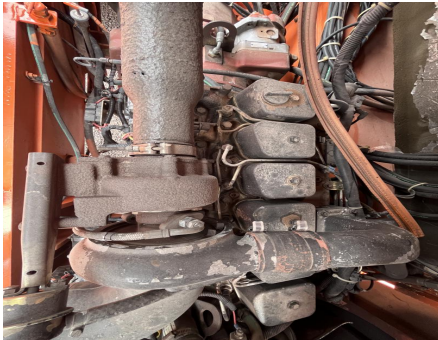
TRACKMOBILE SHUTTLE WAGON SWX415B

SHUTTLE WAGON

SWX415B

2006

XGS41533



CON MOTOR CUMMINS 6BT5.9 DE 152 HP, TRANSMISION JOHN DEERE/ FUNK, 4 VELOCIDADES, FUERZA DE TRACCION 42,000 LBS, NEUMATICOS 12.00R22.5, PESO 40,400 LBS,